

First, Some Inspiration

"You can adapt by changing your organization's relationships with other organizations through ... partnering. Instead of building internal capabilities you turn to partnerships and alliances. As you need to change and adapt, you change partners. (Those) that know how to form and use these partnerings are displacing those that don't get it."
Curtis E. Sahakian



Partnership PROSPECT Class

7 February 2013

Pat Barry, Robin Norris,
Claudia Round, Ryan Braaten



Today's Tantalizing Tour Topics

- Discover Your Northwest
- Displays Supplied by Others
- Technology
- Volunteer Program
- Foundation for Water and Energy Education
- Interpretive Training for other Agencies
- Geocaching
- Environmental Stewardship & MORE!



Partnerships and Technology

Ryan Braaten



BUILDING STRONG®

Technology

Interactive
touch screen
displays



Technology

Podcasts
(bought equipment)



Technology

Digital Photo Frames



Technology

Cell Phone Tour



QR Codes

Stop #1

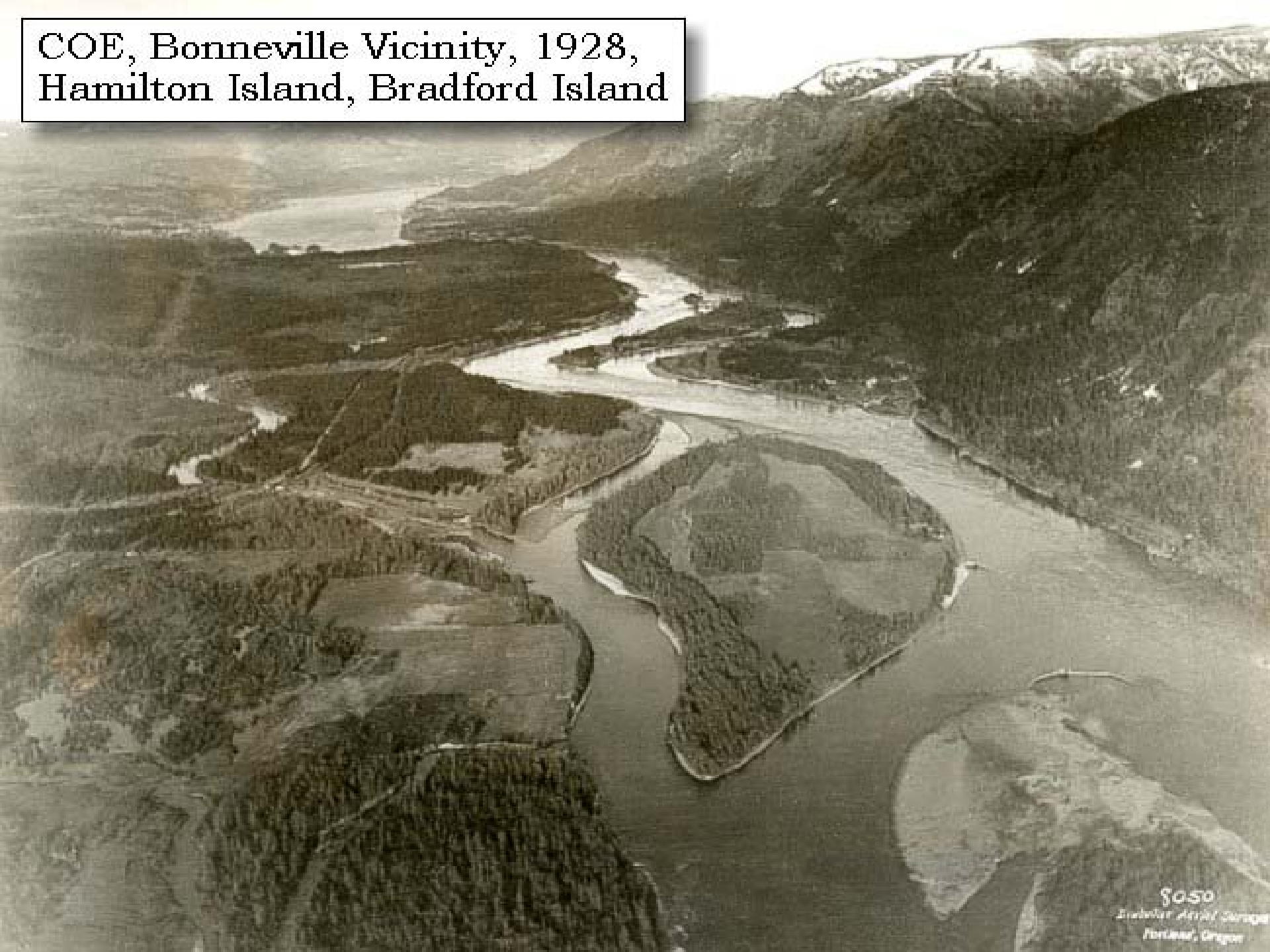
Bonneville Dam:
An Historic Place

Technology

Digital Public Presentations



COE, Bonneville Vicinity, 1928,
Hamilton Island, Bradford Island



5050
Everett Aerial Storage
Portland, Oregon

Volunteers are able to use this technology as well.



BUILDING STRONG®

Volunteer Program

Claudia Round



BUILDING STRONG®

Volunteer Program

- Authorized, 1996, ER 1130-2-500,chapter 10.
- Mission of Visitor Center Volunteer: To define the Bonneville Lock and Dam experience so that visitors understand what we do and why we are here.
- 2012, 414 volunteers, net value \$177,356.19.
(Includes Visitor Center, work crews, and school groups)
- **Free** full hook up RV campsites, laundry facilities, Wi-Fi internet service, phone, security, privacy, reduced entrance costs to other area attractions.



Benefits for Volunteers



Free Wi-Fi



Onsite Laundry Facilities



Visitor Experience



Complimentary Cruise



Full Hookups





2012 Volunteer Appreciation Annual Dinner



BUILDING STRONG®

Other Partners

Robin Norris



BUILDING STRONG®

[nw hydro & tours](#)

[education](#)

[environment](#)

[news](#)



Power Generation and Fish Passage
Tours, Hydroelectric Projects Map,
Video and Resource Materials



Curriculum, Hands-on Projects,
Reference Materials, History



Hydropower and Environmental
Protection



Northwest Hydropower News

[Home](#) [About FWEE](#) [Store](#) [Resource Links](#) [Glossary](#) [Sitemap](#) [Contact Us](#)

WHAT'S POPULAR

[Northwest Hydroelectric Projects](#)
[Walk Through a Hydroelectric Project](#)
[Fish Passage Tour](#)
[Wind Power Tour](#)
[Rivers to Power Video](#)
[Make Your Own Hydropower](#)
[Renewable Resource Guide](#)
[FWEE Store](#)

PARTNERING IN
THE RENEWABLE NORTHWEST
ENERGY FUTURE

[Search](#)



Guernsey



Detroit



Hills Creek



McNary



Smith Creek



Mossyrock



Lost Creek



Minidoka





ALSO IN THIS SECTION

[Mission & Background](#)

[FWEE Members](#)

[Contact Us](#)

[FWEE Store](#)

Search

Mission and Background

MISSION

The Foundation is committed to providing balanced information regarding the use of water as a renewable energy resource in the Northwest.

BACKGROUND

All segments of the public have become increasingly concerned with the costs and benefits of operating hydroelectric facilities. Environmental impacts, operational issues, economic needs, preservation of benefits such as flood control and recreation, and an increasingly complex regulatory and legislative atmosphere contribute to a public often lacking the clarity and information needed to make informed choices.

STAKEHOLDERS

By working with the general public, opinion leaders, teachers, school age children, and other interested groups, the Foundation provides balanced information which can help them make informed choices. Anyone interested in water and energy issues may purchase materials through the Foundation.



GEOCACHING

Welcome, Visitor! [Login with Facebook](#)

Learn Join Play Community Shop Partnering Videos Follow Us English

Geocaching > Hide and Seek A Geocache > Geocache Details

GC1BQTM

BIH
A cache by Bonneville Hidden: 2/4/2008 In Oregon, United States

Difficulty: ★★★★★ Size: 0.000 (meters)
Terrain: ★★★★★

Join now to view geocache location details. It's free! [Sign up](#) [Login](#)

WATCH
How Geocaching Works

Looking for a different adventure? [Find a Cache Near Me](#)

Navigation
[Log in to log your visit](#)
[Log in to watch this listing](#)

Attributes

[What are Attributes?](#)

Advertisements with Us

US Army Corp of Engineers



BUILDING STRONG®

Interpretive Training for Other Agencies

COLUMBIA GORGE DISCOVERY CENTER
WASCO COUNTY HISTORICAL MUSEUM



Partnering with Weed Boards

Contributions Program



Rorripa columbiae
Columbia Yellowcress

- Assist in identification of T&E species
- Volunteers identified Columbia Yellowcress
- Washington State lists as "Threatened"



Hamilton Island
Wildlife Management Unit

- Scotch broom control at Sediment Retention Structure
- Cowlitz County Corrections Crews





Washington Department of Fish and Wildlife

- MOU: Document populations of Western Pond Turtles



Elementary Schools

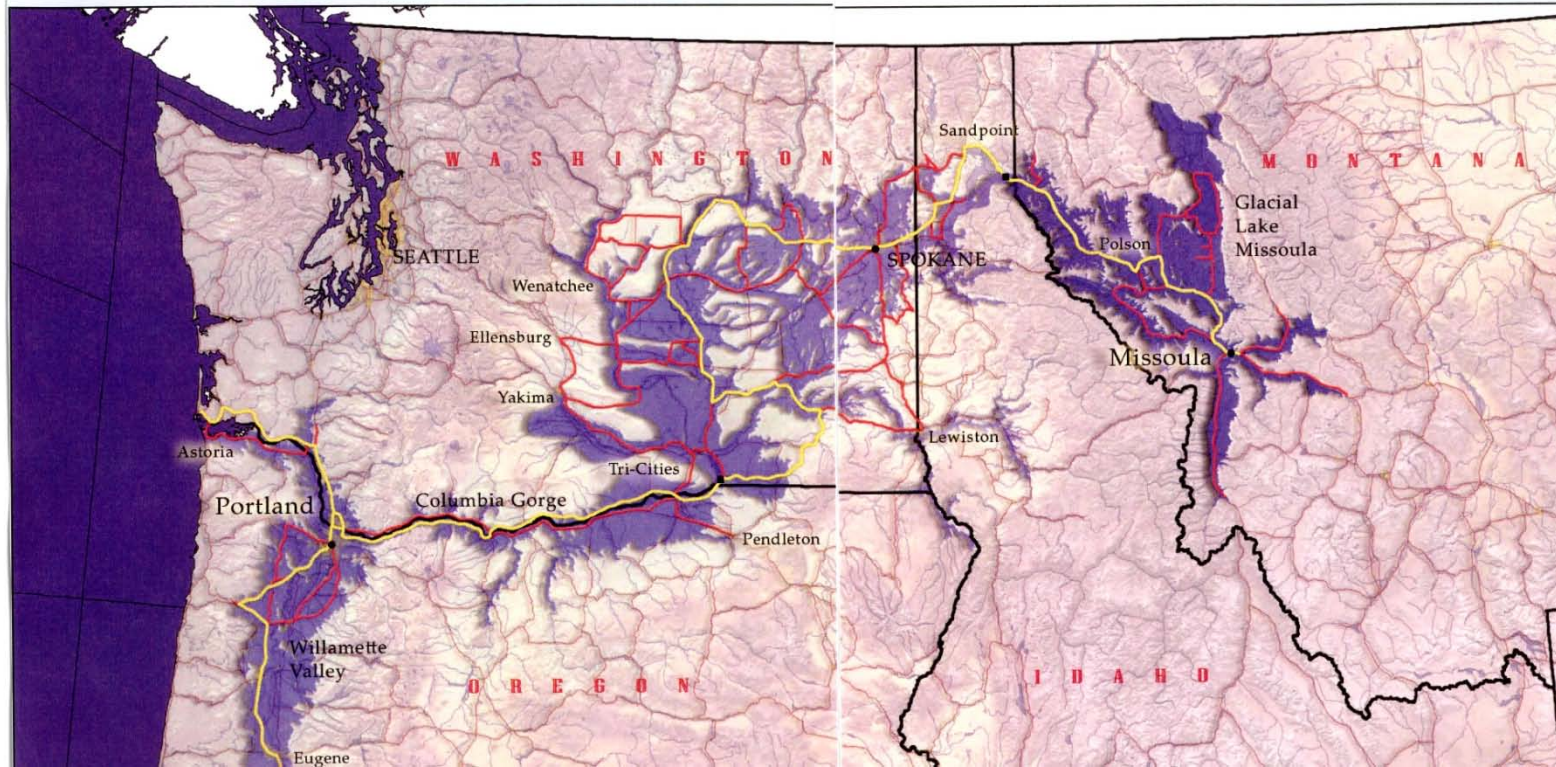




Ice Age Flood Agreement



MAP: ICE AGE FLOODS NATIONAL GEOLOGIC TRAIL REGION



And there's more!



Vital Signs Indicators Project

- Needed information to help make sustainable management decisions.
- Combined effort of federal, state, and local recreation entities.



- No longer have budget to remove litter from fishing areas.
- Implemented "Pack it in, Pack it out" policy.
- Educating the public using Leave No Trace tools.



- MOU describes roles and responsibilities between NWP, NWW and multiple agencies for a water trail along the lower Snake, and Mid and Lower Columbia Rivers.



Future Partnerships

- Produce new Bonneville video
- More volunteers
- ??????

